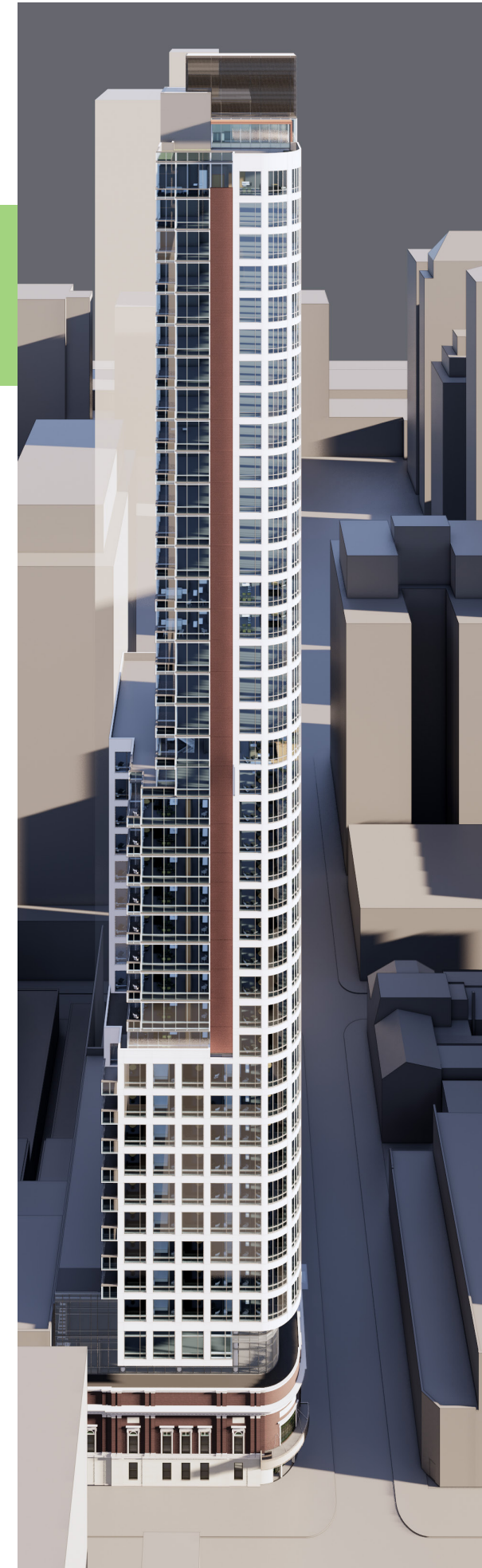


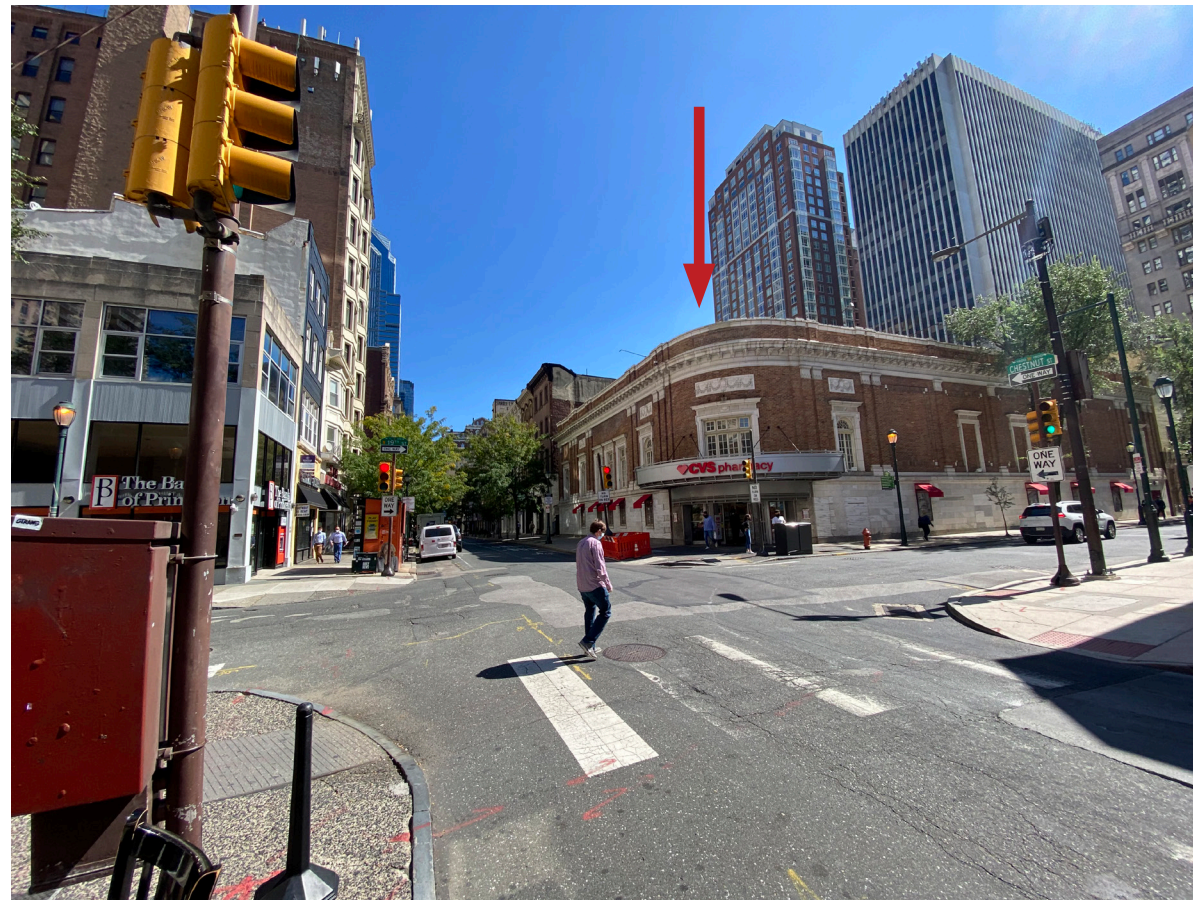
# 1826 CHESTNUT ST.

march 30, 2023 | center city residents association





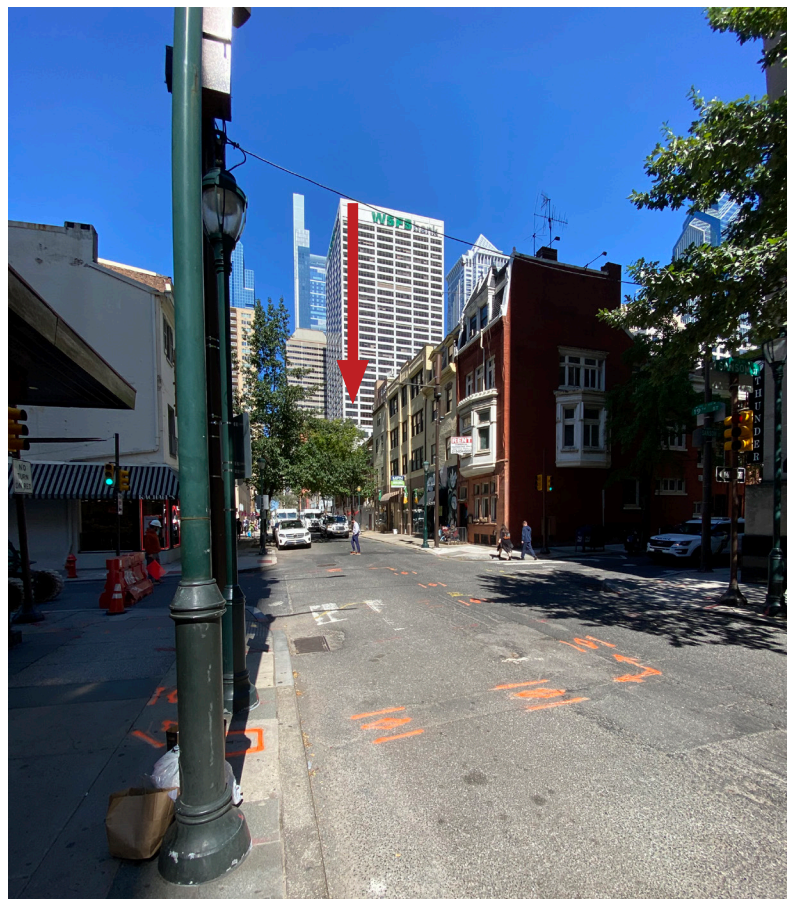
1 VIEW OF SITE FROM 19TH STREET LOOKING SOUTHEAST



2 VIEW OF SITE FROM CHESTNUT STREET LOOKING SOUTHEAST



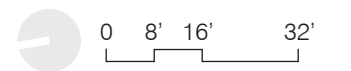
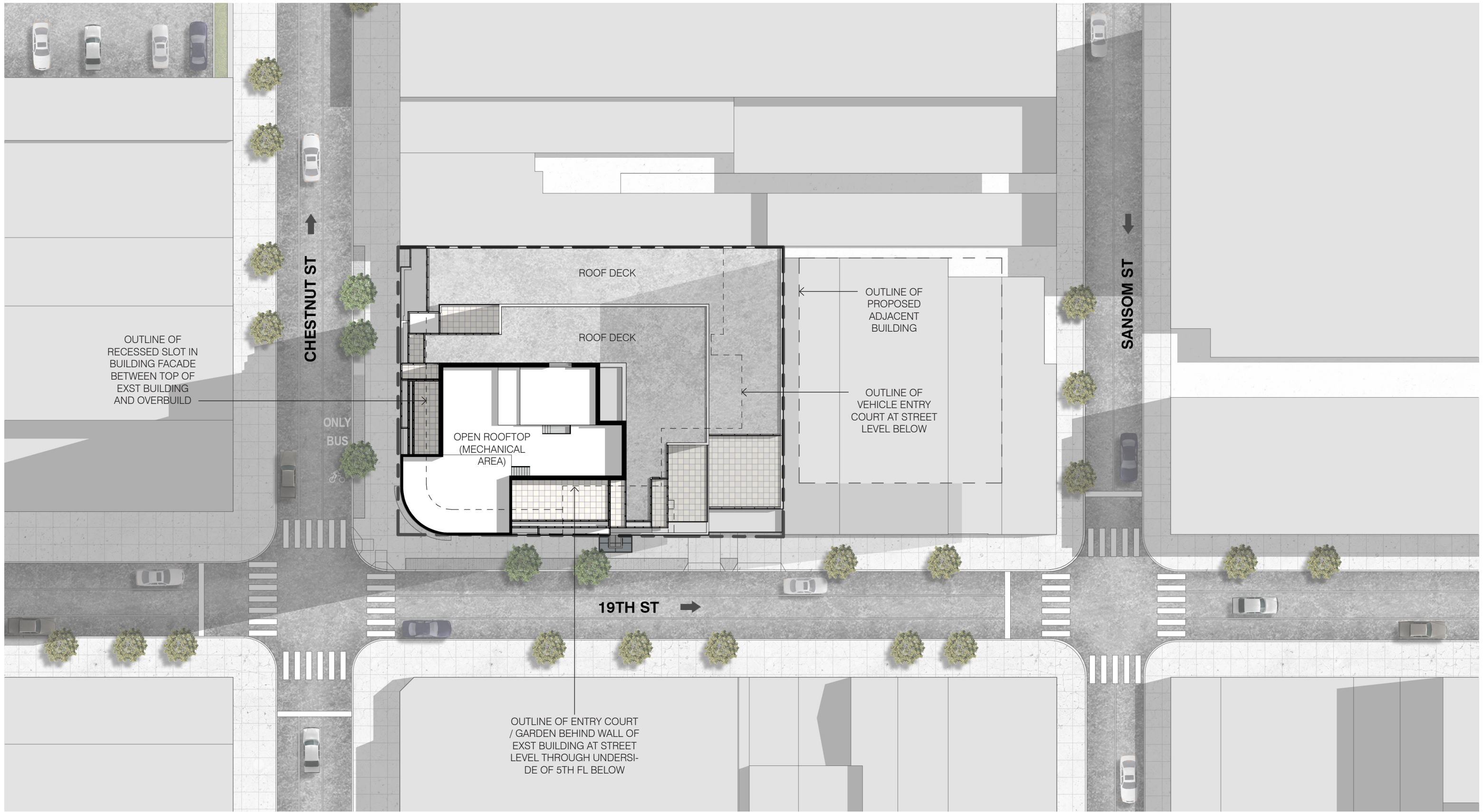
3 VIEW OF SITE FROM CHESTNUT STREET LOOKING EAST

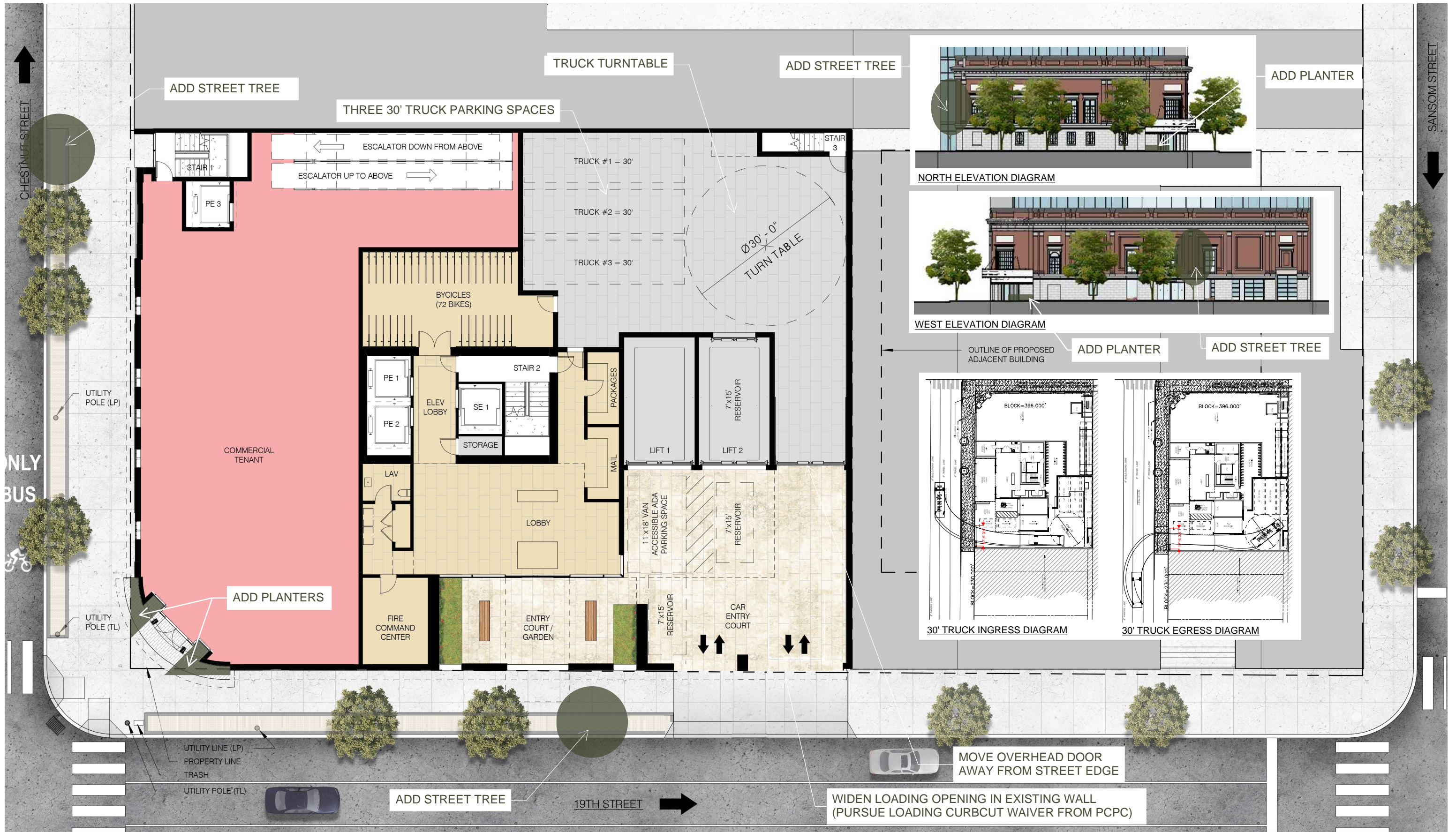


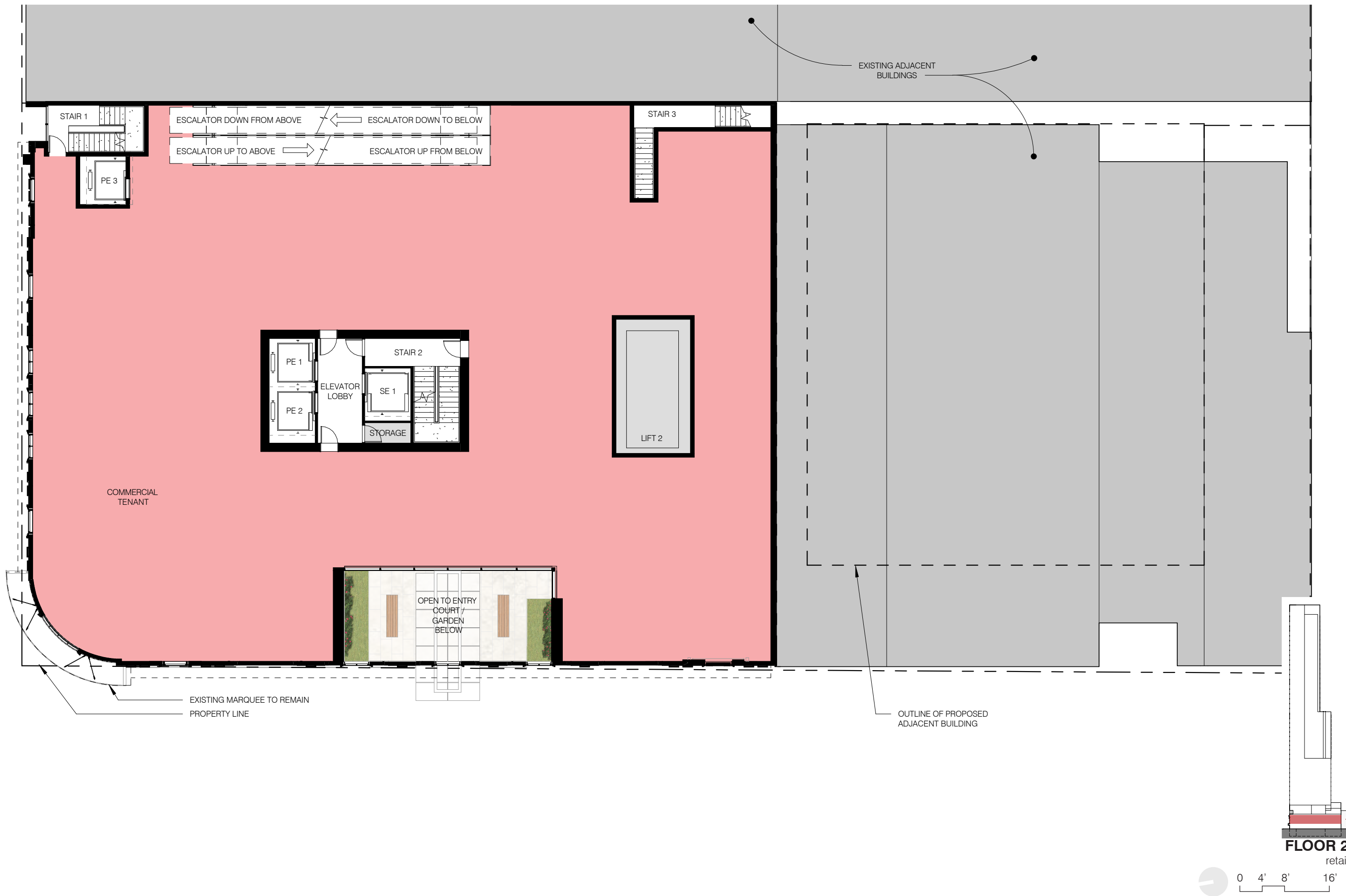
4 VIEW OF SITE FROM 19TH STREET LOOKING NORTH

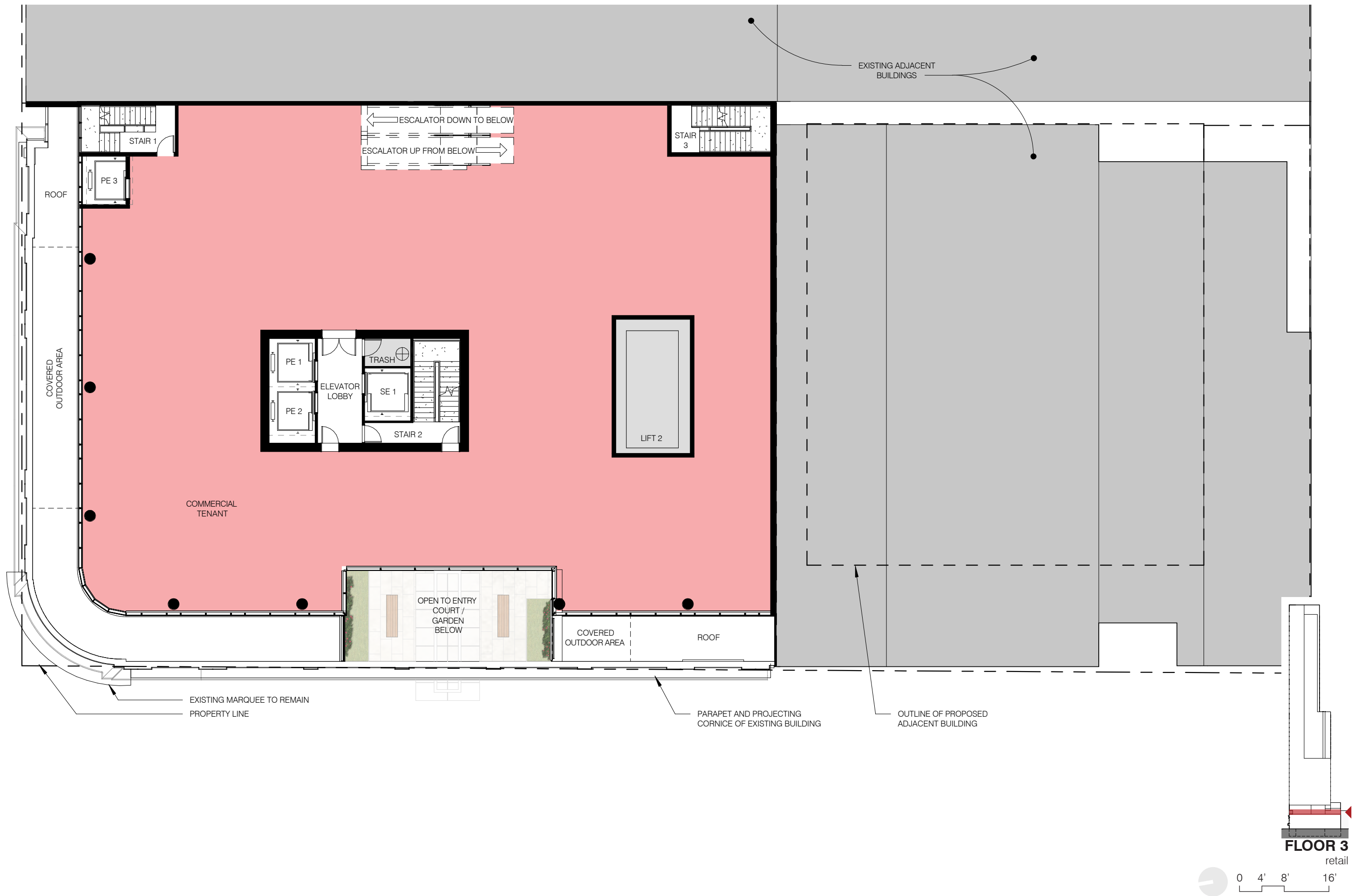


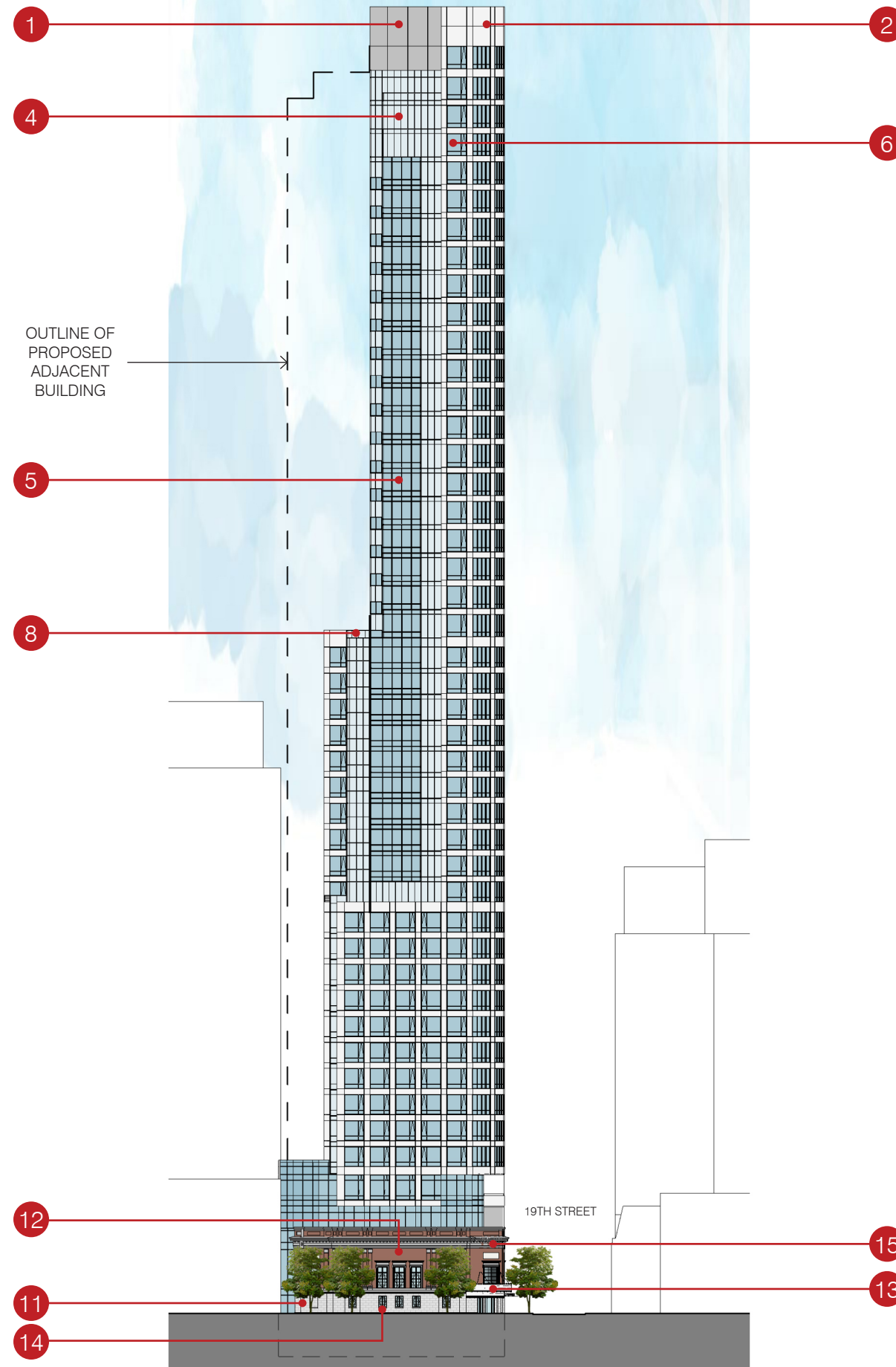
5 VIEW OF SITE FROM CHESTNUT STREET LOOKING WEST







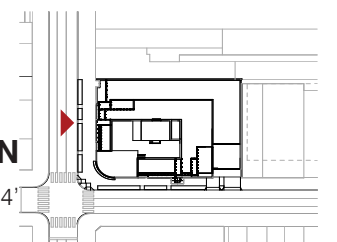


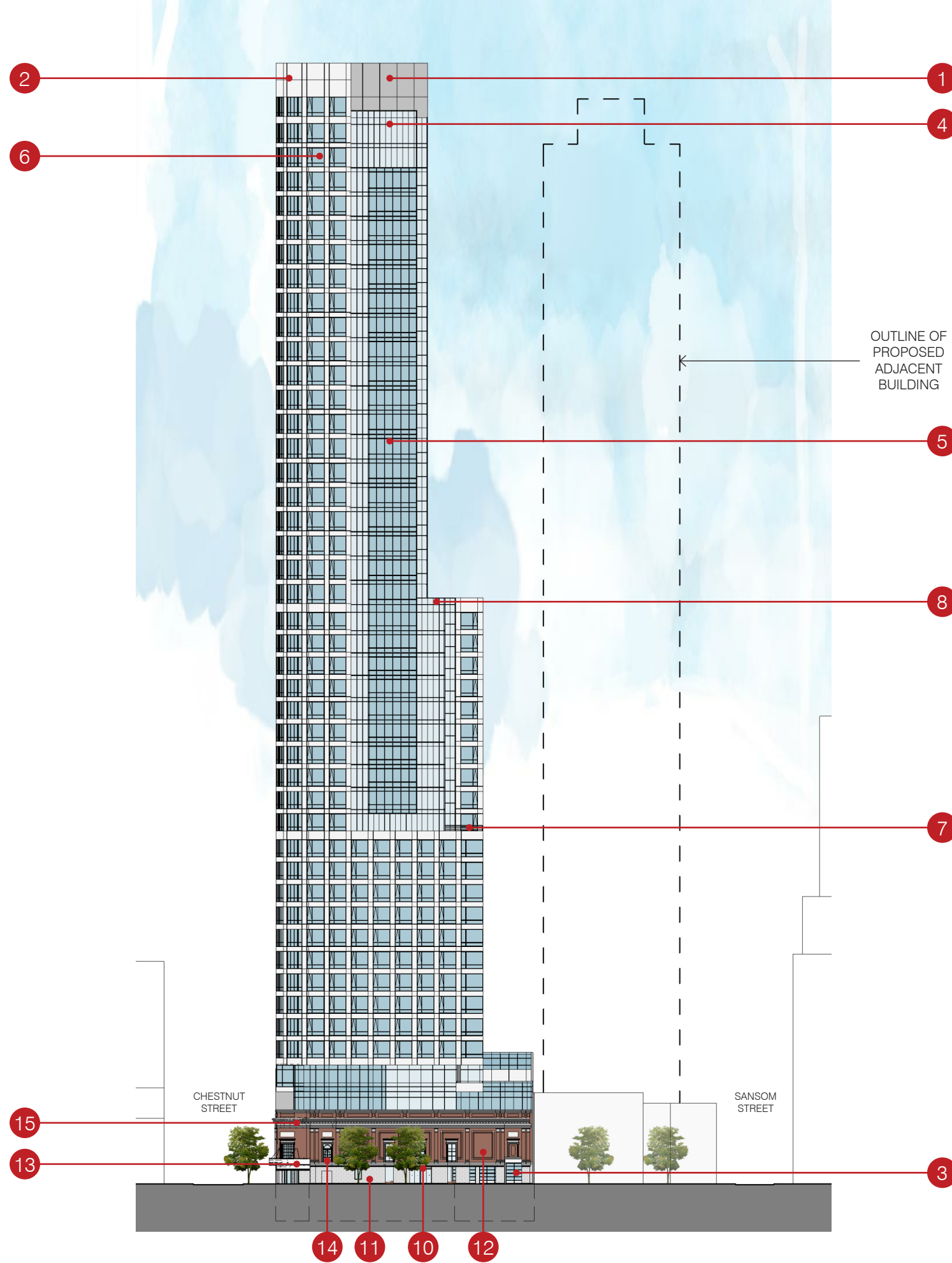


- 1 EXPOSED CONCRETE WITH EPOXY COATING
- 2 METAL WALL PANEL SYSTEM
- 4 WINDOW WALL A
- 5 WINDOW WALL B
- 6 WINDOWS
- 8 GLASS GUARDRAIL
- 11 EXISTING LIMESTONE BASE
- 12 EXISTING BRICK
- 13 EXST METAL SIGN MARQUE & STOREFRONT
- 14 EXISTING WOOD WINDOWS
- 15 EXISTING TERRA COTTA

**NORTH ELEVATION**

0 16' 32' 64'

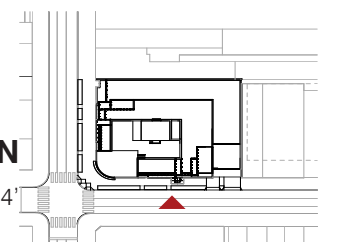




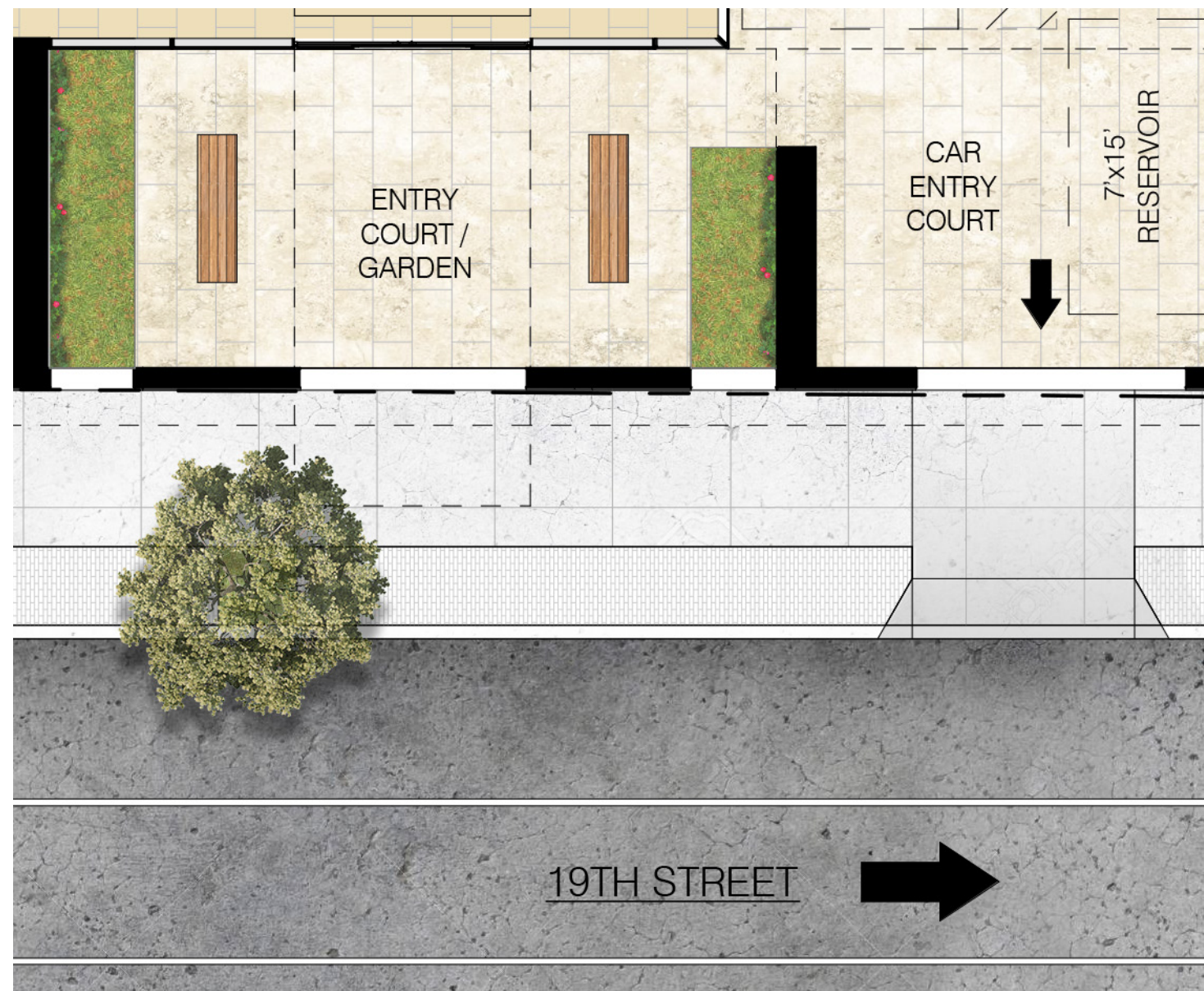
- 1 EXPOSED CONCRETE WITH EPOXY COATING
- 2 METAL WALL PANEL SYSTEM
- 3 OVERHEAD DOORS
- 4 WINDOW WALL A
- 5 WINDOW WALL B
- 6 WINDOWS
- 7 METAL GUARDRAIL
- 8 GLASS GUARDRAIL
- 10 GLASS CANOPY
- 11 EXISTING LIMESTONE BASE
- 12 EXISTING BRICK
- 13 EXST METAL SIGN MARQUE & STOREFRONT
- 14 EXISTING WOOD WINDOWS
- 15 EXISTING TERRA COTTA

**WEST ELEVATION**

0 16' 32' 64'

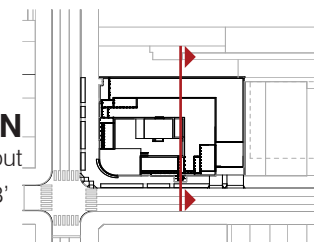
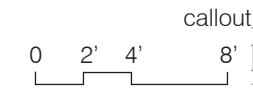






GROUND FLOOR CALLOUT

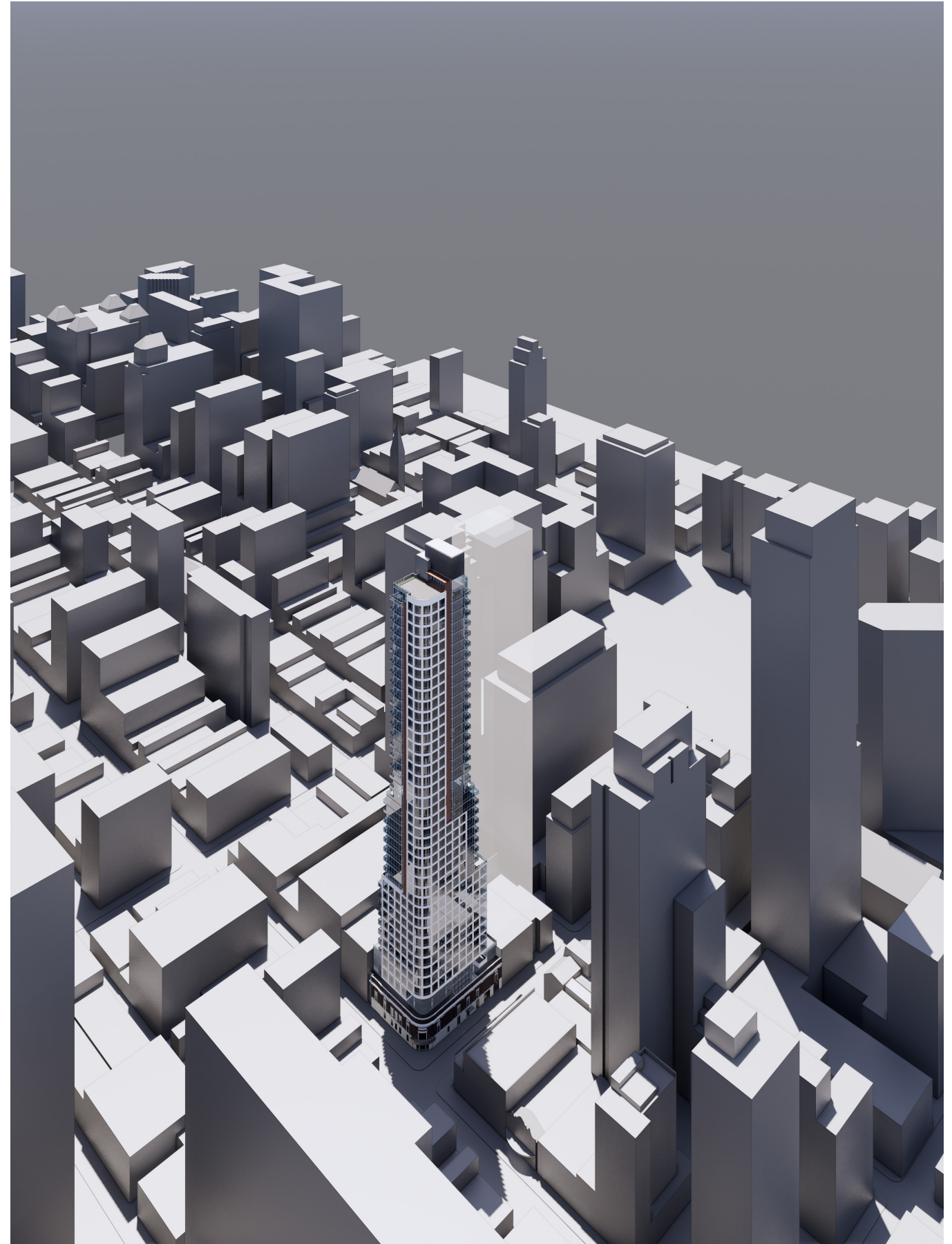
EAST-WEST SECTION



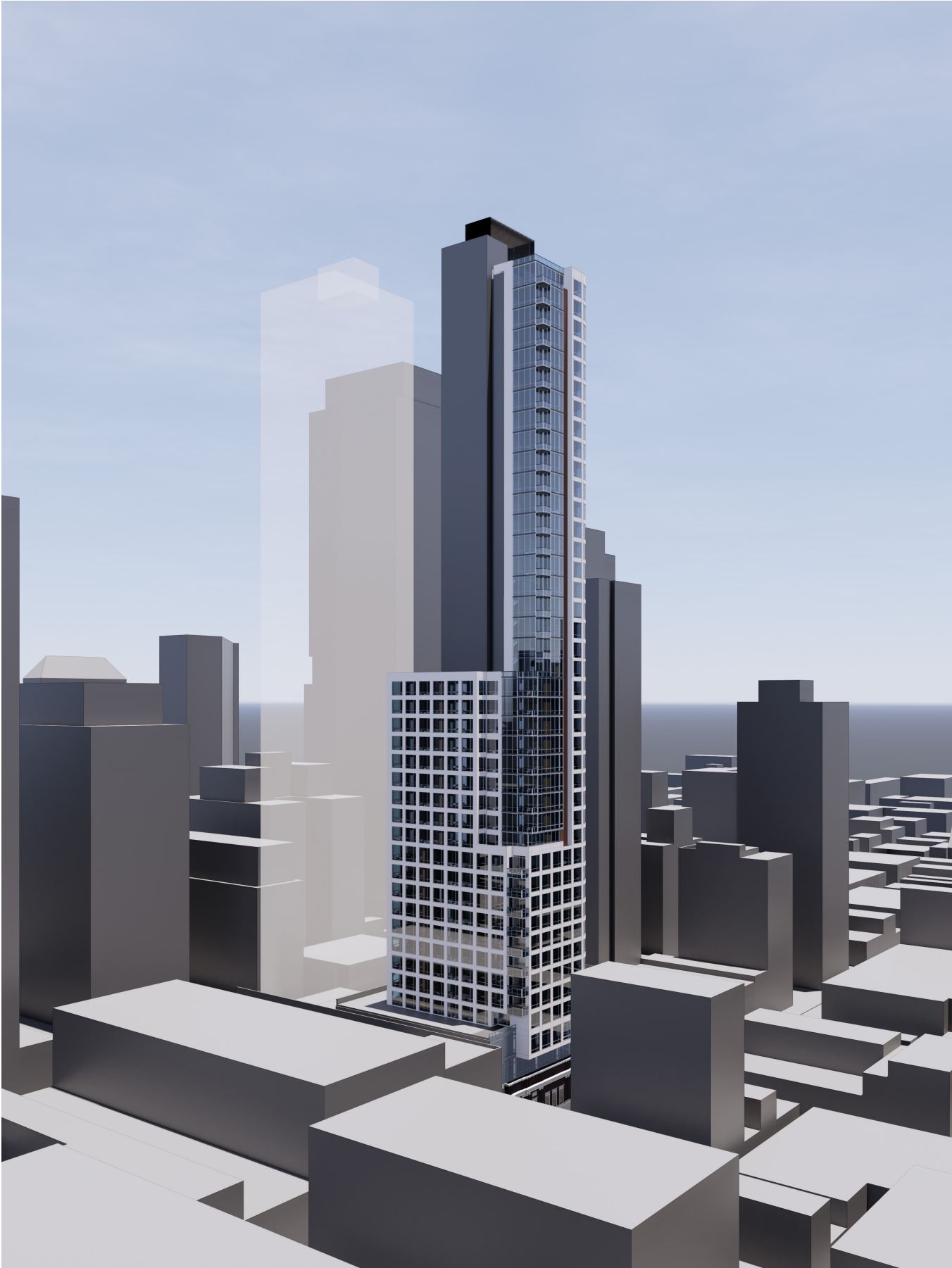
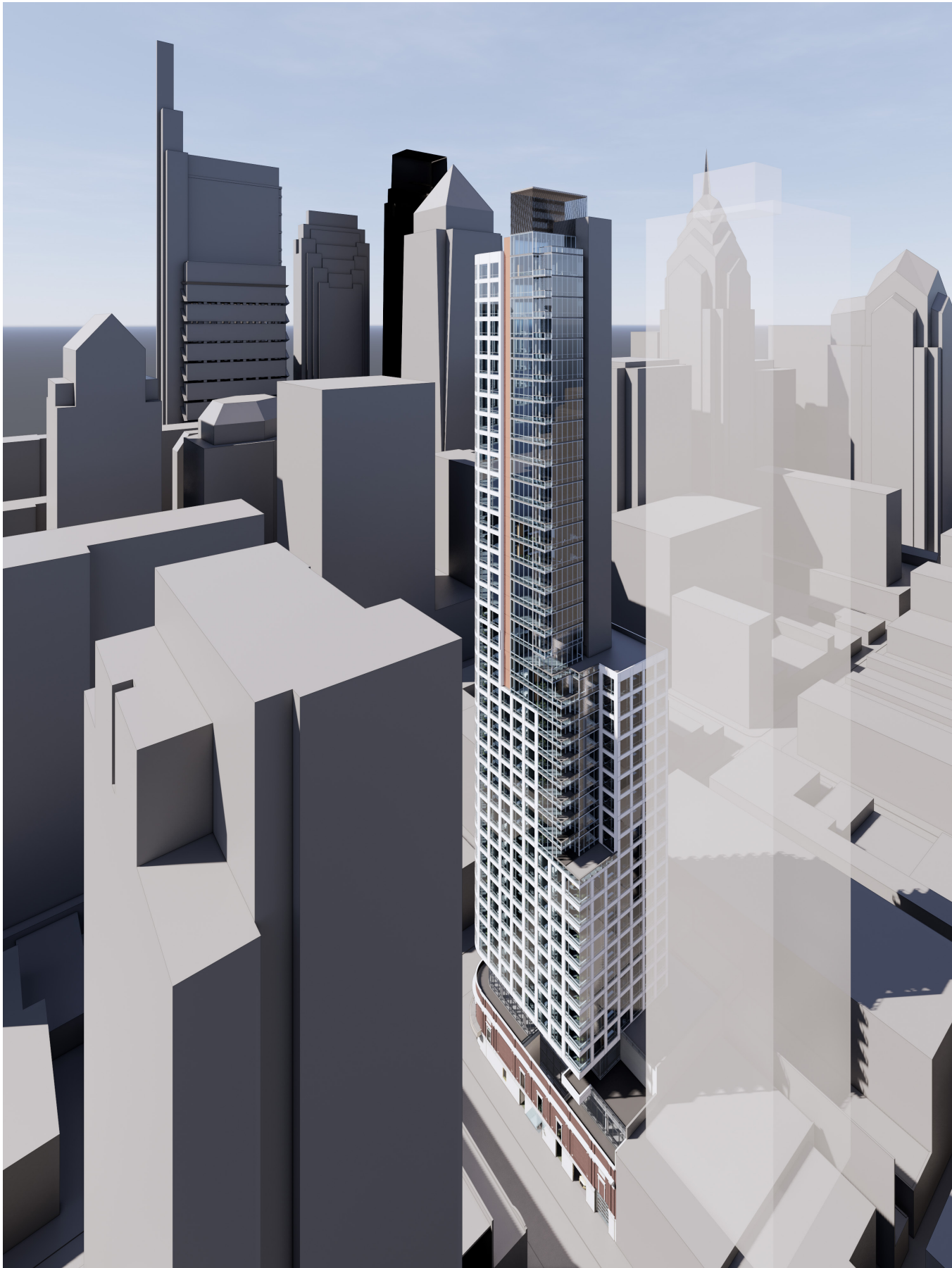
AERIAL VIEW LOOKING SOUTHEAST



AERIAL VIEW LOOKING SOUTH



AERIAL VIEW LOOKING NORTHEAST



AERIAL VIEW LOOKING SOUTHWEST



VIEW LOOKING EAST ON CHESTNUT STREET & SOUTH ON 19TH STREET



STREET VIEW LOOKING NORTH ON 19TH STREET



**STREET VIEW LOOKING NORTH ON 19TH STREET**



STREET VIEW LOOKING WEST ON CHESTNUT STREET



**STREET VIEW LOOKING EAST ON CHESTNUT STREET**



